

Kungsbron Entrance

What will happen in the entrance from Kungsbron?

We dreamed together

On February 13, 2024, we held a workshop together with our tenants to identify common dreams about what we wanted to see in the Kungsbro entrance.

The outcome has been the foundation in the development of the entrance from Kungsbron.

Among other things, there were wishes for a more inviting entrance, more greenery and birds chirping, and that the architecture is preserved.



Entré Kungsbron

1. Focus will be on preserving the postmodernist architecture through careful restoration of quality materials that will age beautifully.
2. Greenery is the main concept and has been an important element of the interior since the property was built. We add new vegetation and plants from a botanical garden - everything from exotic palm trees to colorful bougainvillea.
3. The final result will be a much more inviting environment to welcome your visitors and employees to WTC.

alecta
fastigheter



A modern building entrance featuring a large glass facade and a canopy with a grid of illuminated slats. A central glass revolving door is flanked by glass walls. To the left, there are potted plants and a low wall. The interior is visible through the glass, showing a reception area with a sign that reads "RECEPTION - RCT - E-INFO-REC".

**A welcoming entrance
with plants and lighting**

New hanging canopy with
integrated lighting

The existing suspended ceiling is restored
and supplemented with new lighting



The exterior is complemented
by new vegetation

New revolving door and
simplified entrance



A welcoming environment
with more greenery, seating
areas and espresso bar

New suspended ceiling with original perforated sheet metal slats complemented by LED lighting

Social seating areas with built-in charging sockets

Existing wall cladding is repaired and preserved. Elevator doors are refreshed.

Visitor toilet

Post boxes



Existing limestone floor is preserved, cleaned and easily polished

Textiles, carpets and furnishings with wood elements to dampen sound

New welcoming reception with barista coffee service

Interactive information screen







**More greenery and
seating areas on 4th floor**

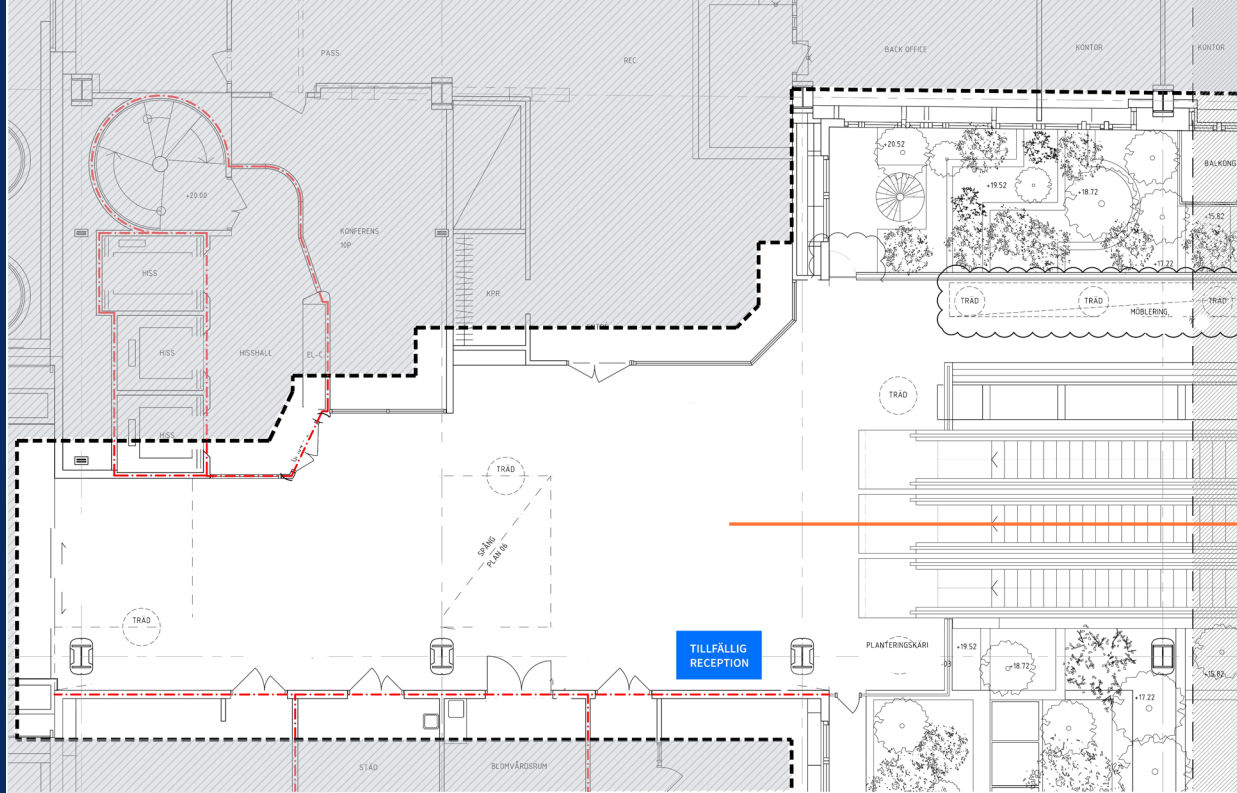
Implementation

Times

- Implementation time approx. 5-6 months
- Implementation will take place in stages

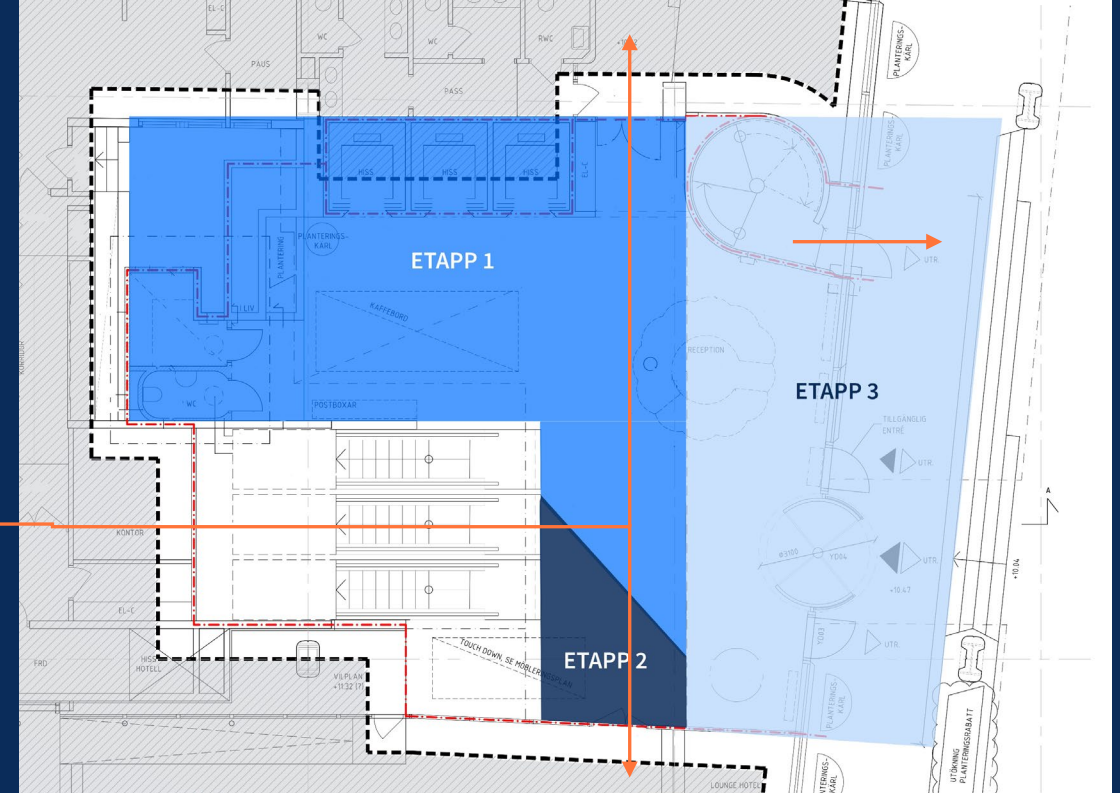
The construction area, stage 2 and 3

4TH FLOOR



- During stage 3, a temporary entrance will be available via the hotel
- Temporary reception will be located on floor 4 during the production
- Accessibility-adapted access during production time takes place via Klarabergsviadukten 70
- No access to elevators from the ground floor during production time
- On evenings (17-08) and weekends, access will take place via Klarabergsviadukten 70, Östra järnväggsgatan 15 or other optional entrance.

ENTRANCE FLOOR



- Emergency escape routes (orange arrows) and entrances are adapted depending on the construction stage
- Most of the work takes place on the entrance floor
- On floor 4, painting and lighting work will take place
- Interior design work and planting will take place sporadically, but mainly in the final stage

How will I be affected by the construction in the Kungsbron entrance?

- The façade, including the entrance doors, will be cordoned off during stage 2 and 3. We therefore kindly ask you to use other entrances. From Kungsbron, it will be possible to enter via the hotel during office hours (08.00 – 17.00). During weekends and outside of office hours (17.00 – 08.00), access will be available via Klarabergsviadukten 70, Östra järnvägsgatan 15 or another entrance that suits you best.
- The lifts on the entrance floor will remain closed. Please therefore use the escalator to travel to and from floor 4, from where the lift is running as usual between the other floors.
- Accessibility-adapted access will continue to be available via Klarabergsviadukten 70 or Östra järnvägsgatan. A ramp will be installed outside to provide accessibility-adapted access to the hotel.
- The evacuation route will run via the Manhattan conference room or via the hote.
- Temporary reception will be located on floor 4 during the construction period.

How and where will I get information?

- Project website with information
- Newsletters
- Ongoing dialogue

We will send out surveys and are kindly asking you to answer these to let us know if you are missing any information.





Do not hesitate to contact us if
you have any questions!